

Industry Brief
Steam Energy
Independent Industry support
Doc #2

STEAM LINK®
Sustainable Steam Plant Operation

In the scope of industrial, cost-effective, and safe, bulk energy supply systems, steam plays a critical role as a reliable and efficient energy carrier. Steam Link® is at the forefront of integrating steam energy solutions tailored to specific site and process requirements, thereby enhancing sustainability and operational efficiency.

Steam Link® specialises in optimising steam plants (new installation and up-grades) to ensure they deliver energy in the most cost-effective and environmentally friendly manner. Their approach involves a comprehensive analysis of the existing steam distribution system to identify and rectify any inefficiencies, such as air, vacuum, or condensate build-up, which can significantly affect the performance and cost-effectiveness of the steam plant.

Steam Link's ability extends from selecting the required steam and condensate control products, to the energy distribution design and managing the installation of steam supply and condensate recovery systems, ensuring that they align with the production procedures. This meticulous integration results in a steam energy system that operates in harmony with the production process, maximizing the operating dynamics and minimizing energy intake, greenhouse gas emissions, and operating costs.

One of the key aspects of Steam Link's service is their focus on sustainability. By implementing energy-efficient solutions, they help businesses achieve more with less—less energy, time, resources, and waste. This not only contributes to a reduced carbon footprint but also leads to substantial energy savings and improved plant performance, lowering production costs per unit.

Steam Link's commitment to providing advanced steam energy solutions is evident in their successful projects, ranging from new multi-boiler installations (Hospital) to steam system upgrades (Food processing Plant), modify stockfeed steam supply, improve control of concrete curing process, commercial laundries, and timber drying operation. Their work with diverse industries and general manufacturing, highlights their ability to adapt and deliver tailored solutions that meet the unique needs of each client.

In conclusion, the integration of site and process-specific steam energy solutions is a critical step towards achieving sustainable industrial operations. Companies like Steam Link play a crucial role in this transition, offering expertise and innovative solutions that not only enhance energy efficiency but also drive economic and environmental benefits. As industries continue to seek ways to reduce their ecological impact while supporting productivity, the services provided by Steam Link® will undoubtedly become increasingly valuable.

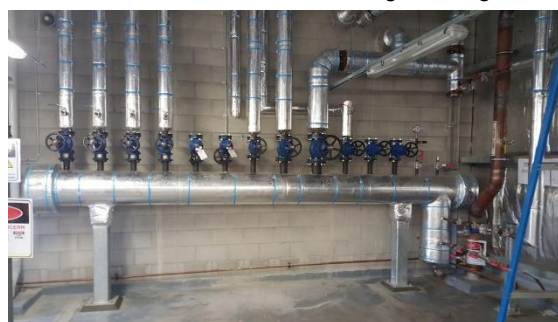
**Report provided by Consulting Engineer,
a satisfied Steam Link client**

For more information on how Steam Link® can assist your company optimising the steam plant performance and sustainability, contact us, via E-mail steam@steamlink.com.au and leave your contact details, a steam specialist will call you within 3 working days.

Multi Boiler installation 3 x 500kW, NG fired



Main Steam distribution manifold, designed, engineered.



Manfred Schneider

Industry liaison Manager

STEAM LINK®

manfred@steamlink.com.au

STEAM LINK®

Unit 100 / 193 South Pine Rd, Brendale Qld 4500

Call: 07 3881 1605 email: steam@steamlink.com.au Web: www.steam@steamlink.com.au

© STEAM LINK 2024

ABN 42 609 810 663

Page 2 of 2